



BIRMINGHAM CITY  
University



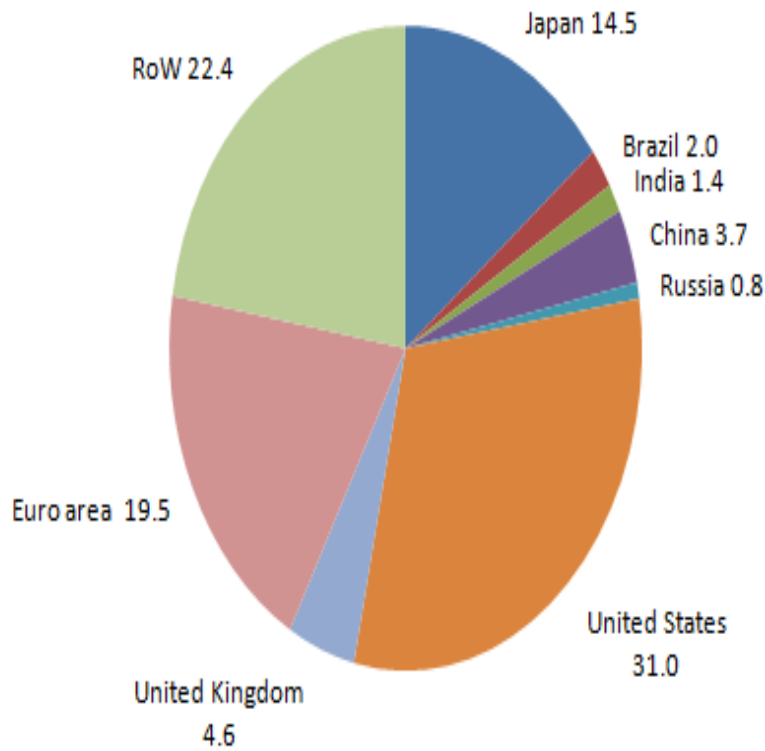
Mel Lees Executive Dean

# Economic Trends

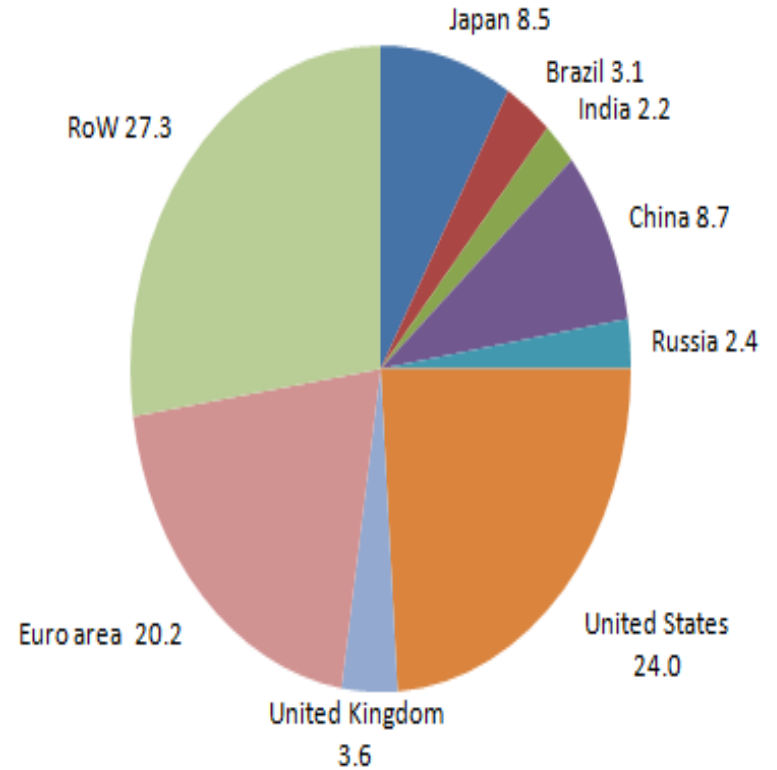
Paul Forrest

# BRICs....an acronym too far

## Global GDP (2000, %)

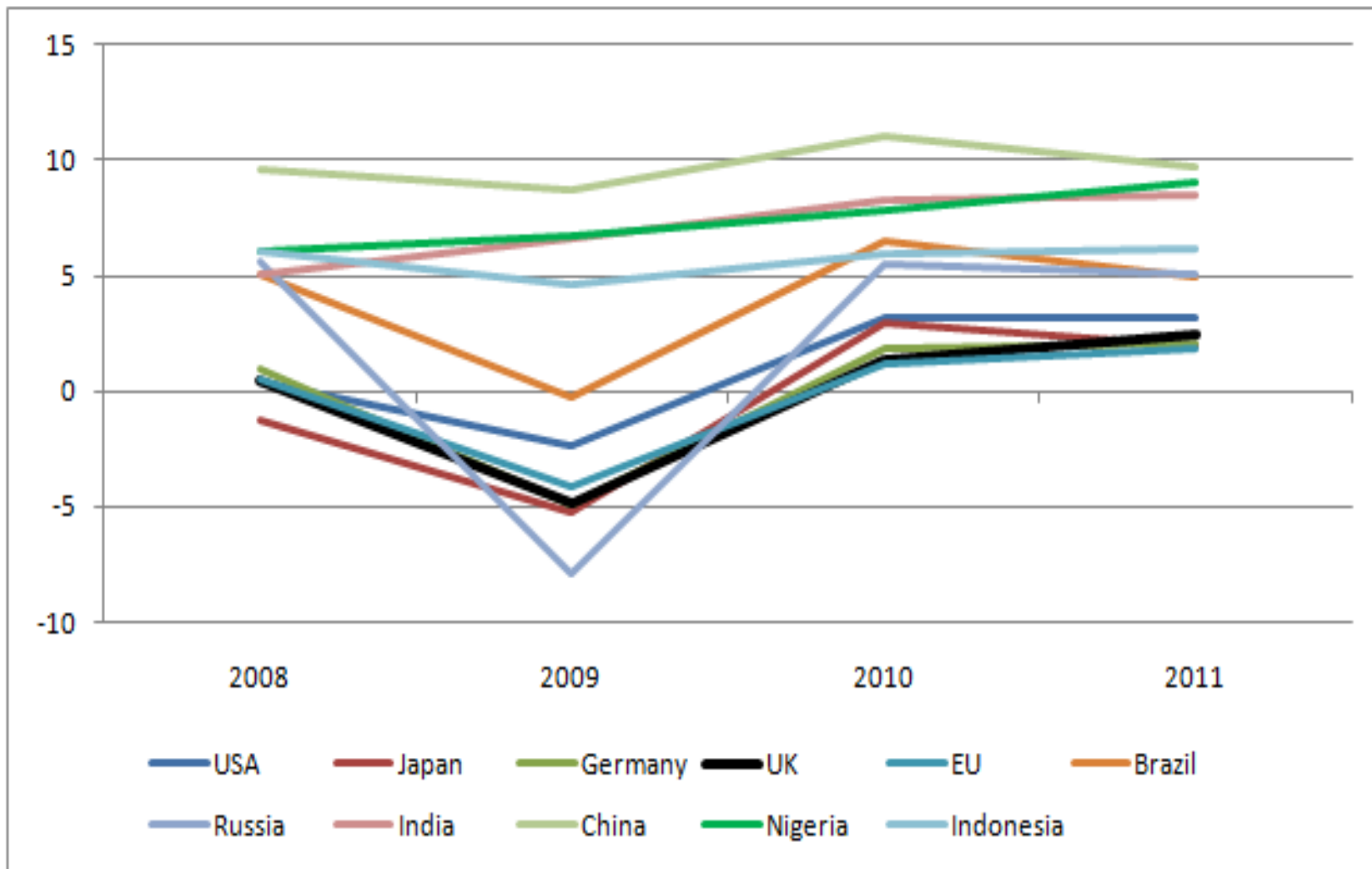


## Global GDP (2010, %)



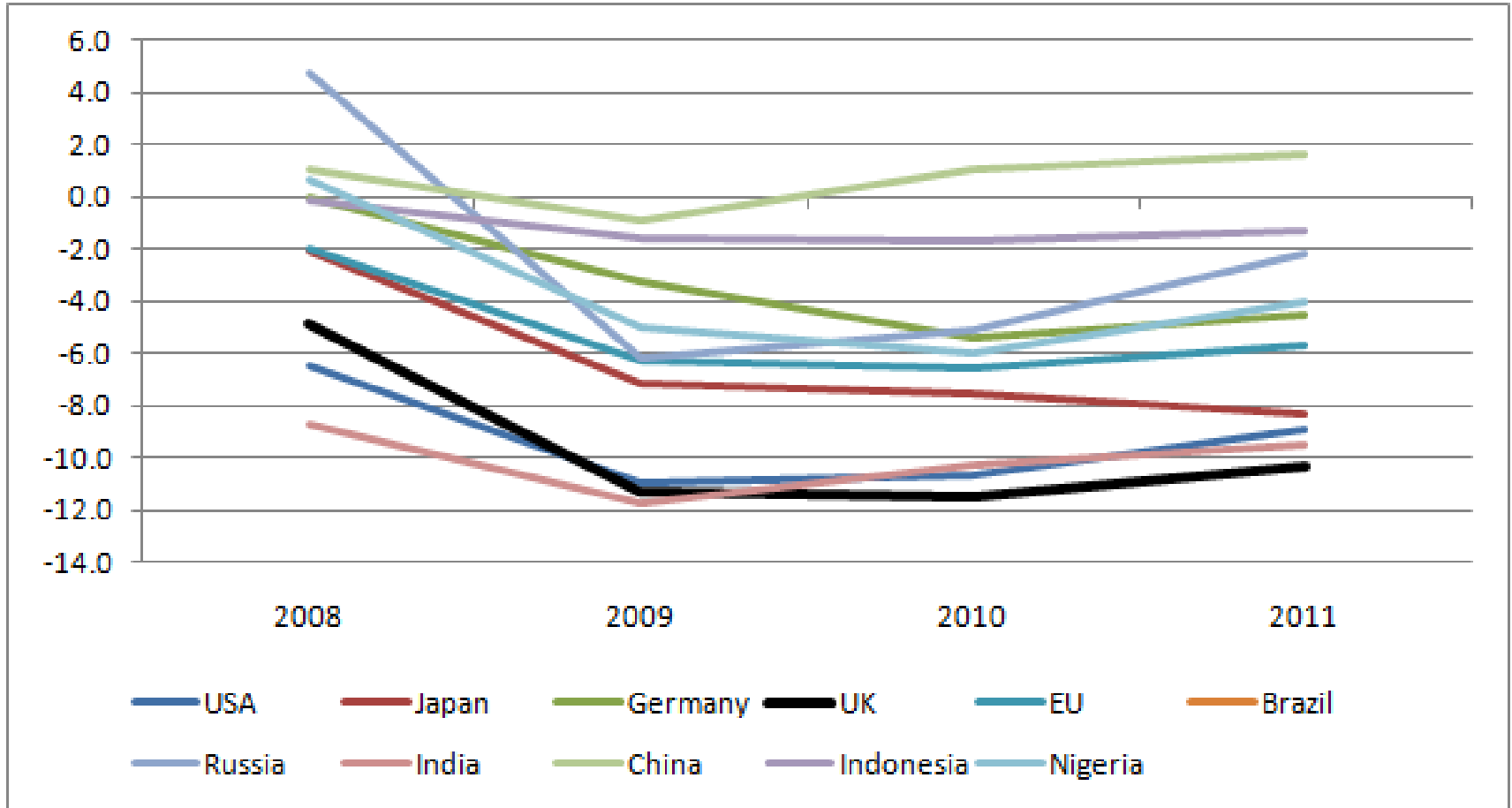
Source: IMF & Forrester Research

# Real GDP Growth (% change)



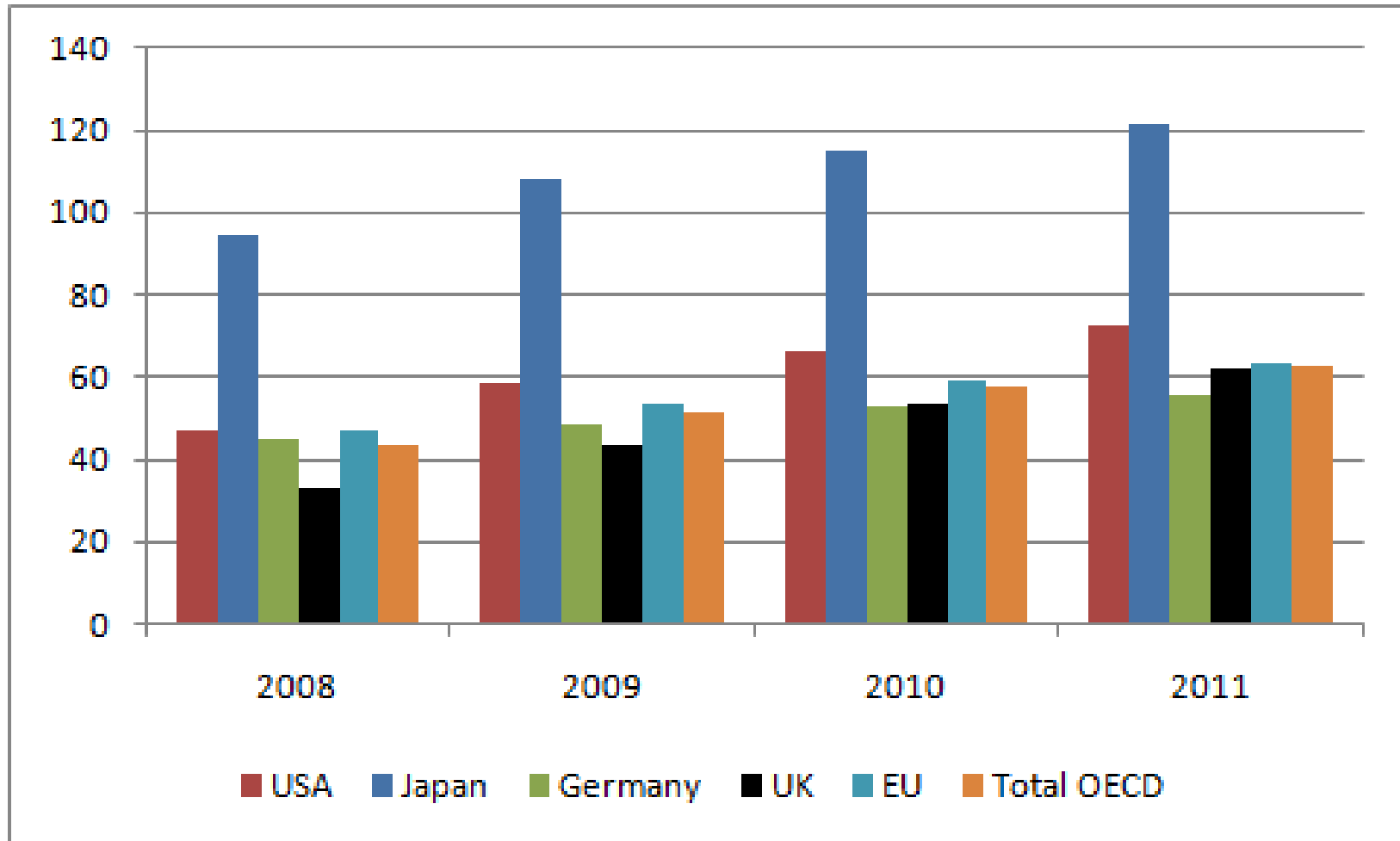
Source: OECD & Forrest Research

## Government Fiscal Deficit (% of GDP)



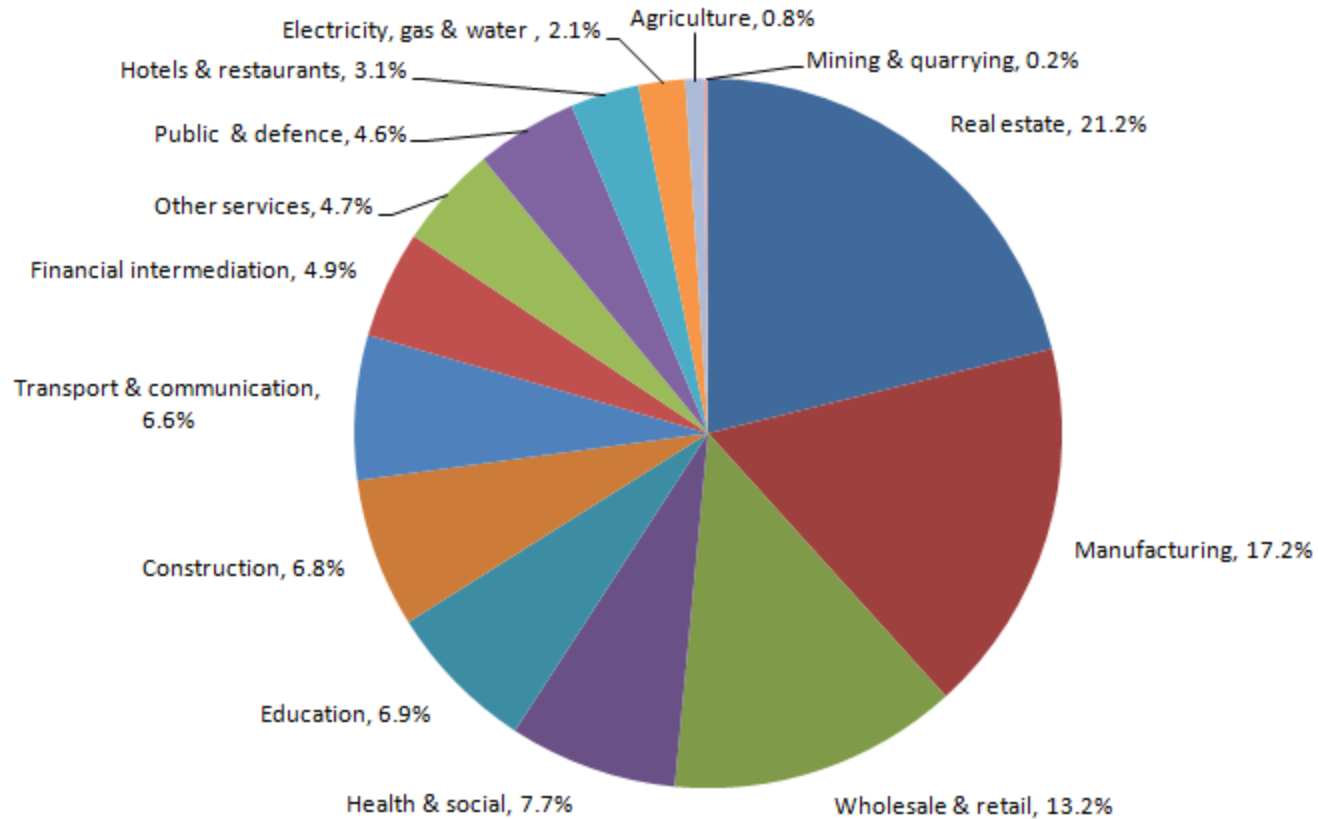
Source: OECD & Forrest Research

# Government Net Foreign Liabilities (% of GDP)



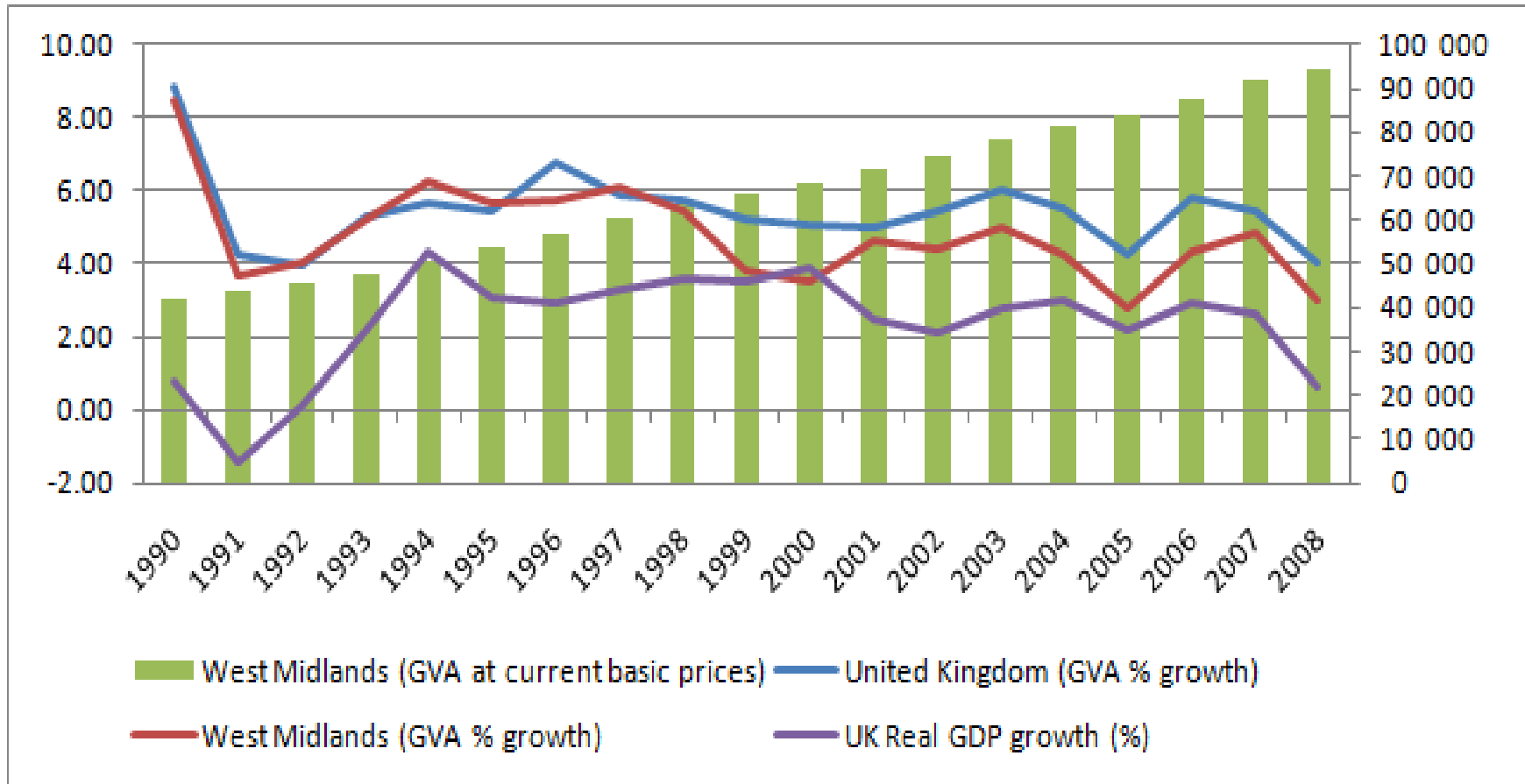
Source: OECD & Forrest Research

## West Midlands GDP Structure (2006 %)



Source: OECD & Forrest Research

# Adding Value.....?.

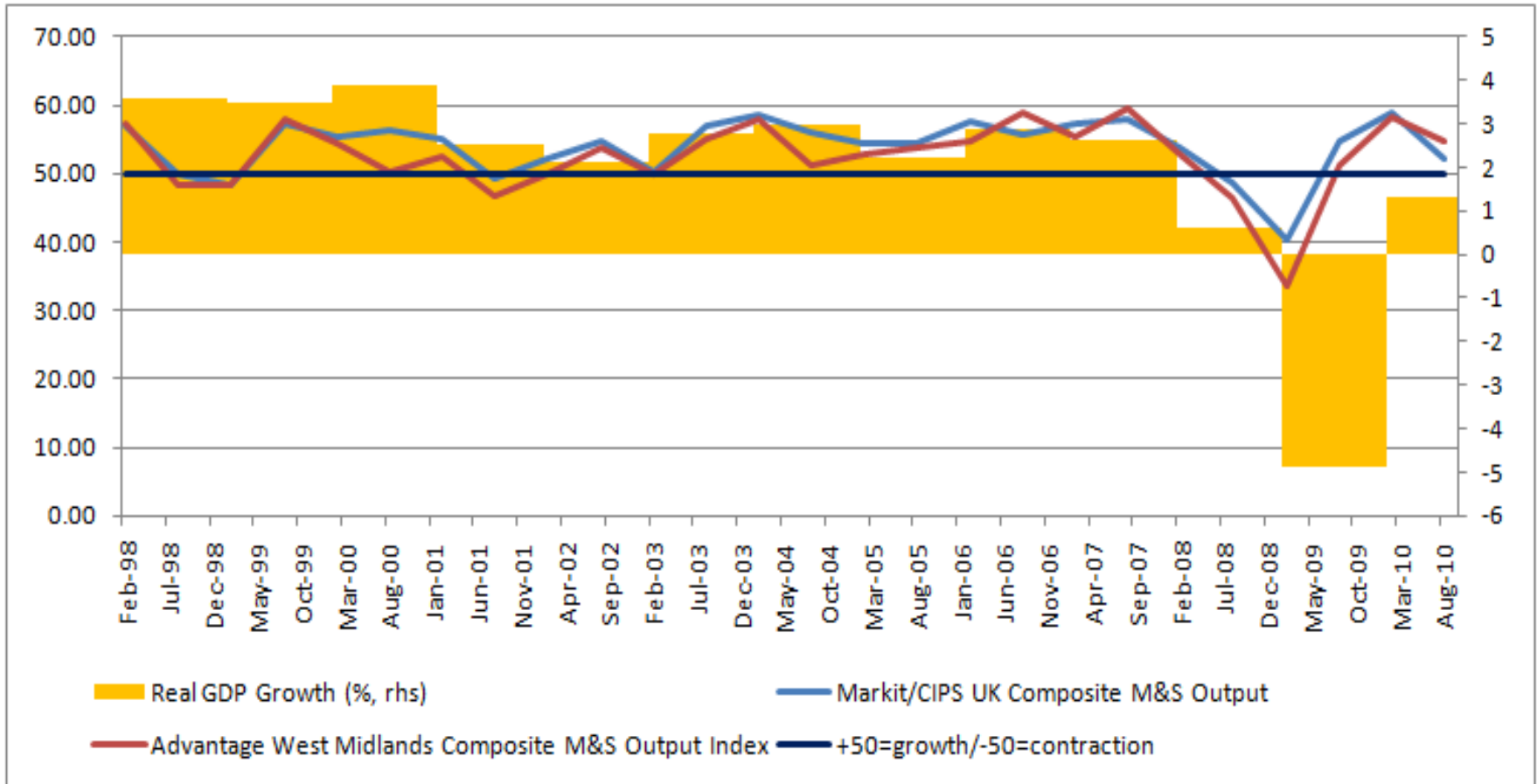


8 Beaufort Way  
 Aldridge WS9 0HJ  
 Tel: 01922 457336  
**Paul Forrest, Director**  
 Mobile: 07738 324517  
 mail@forrestresearch.co.uk

Source: Markit, ONS, EU & Forrest Research

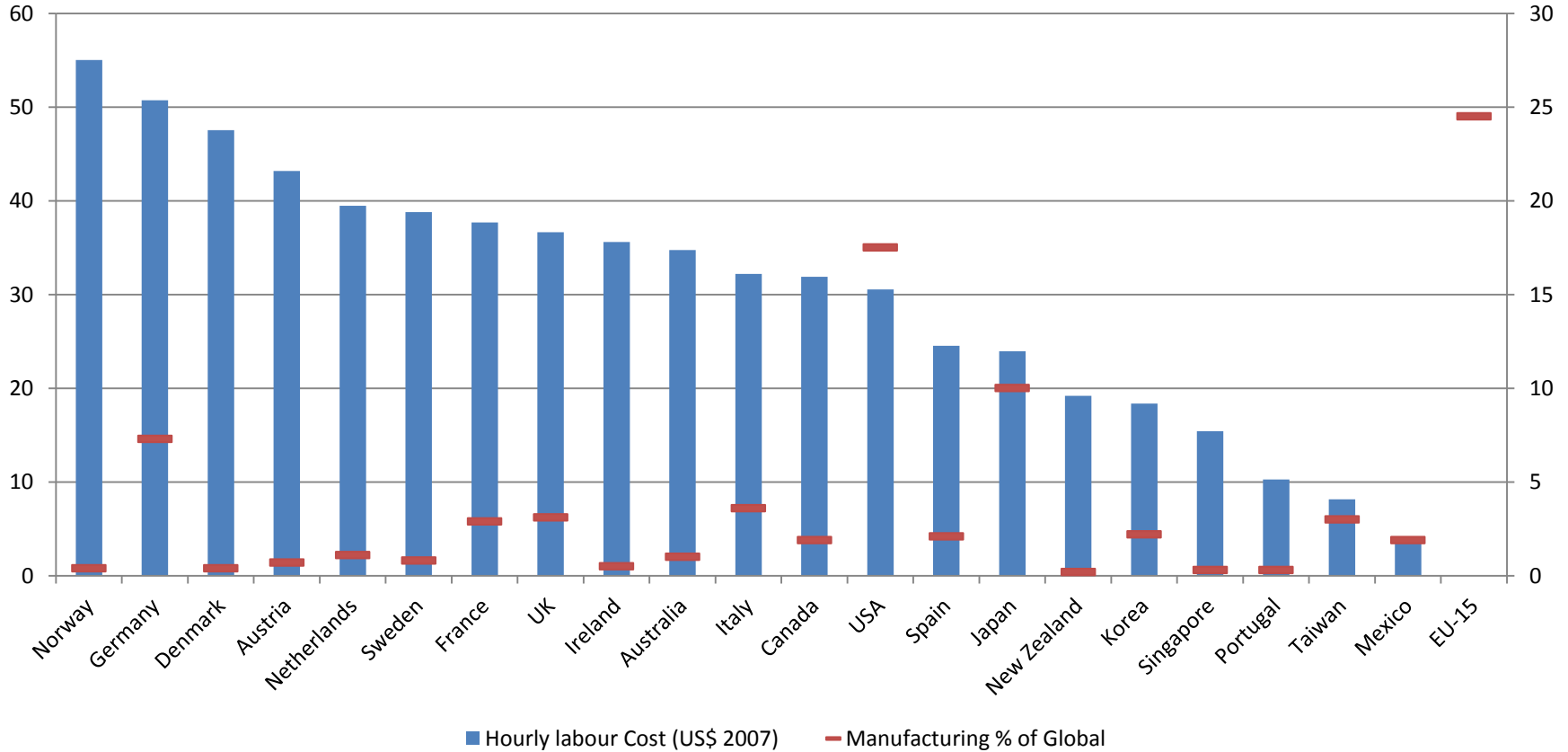


# Economic Prospects.....?



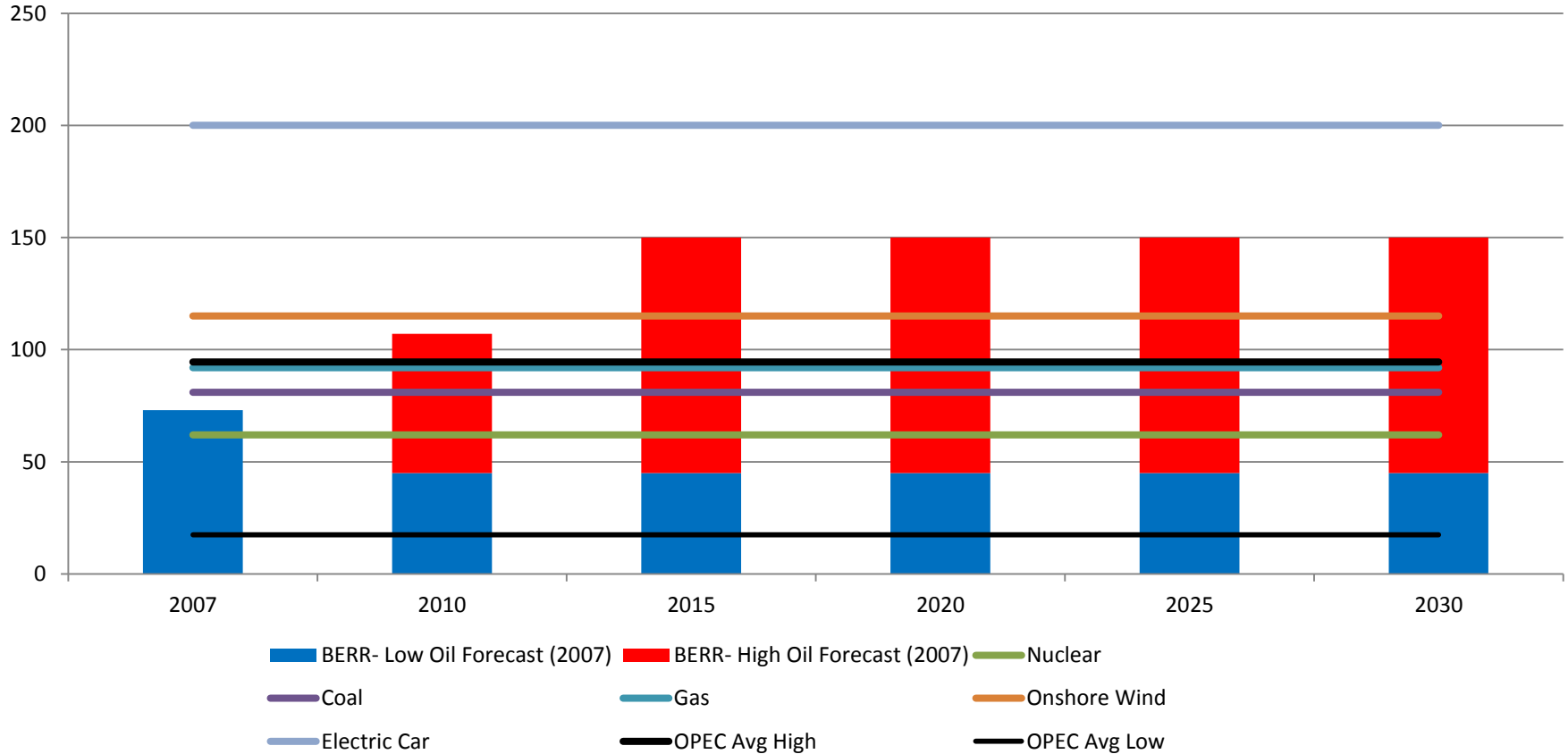
Source: Markit, ONS & Forrest Research

# Comparative Labour Cost & Manufacturing Size



Source: Markit, ONS & Forrest Research

# Comparative Energy Costs (US\$)



Source: OPEC, BERR & Forrest Research



BIRMINGHAM CITY  
University



James Morris MP